

# ADVANCED ENGINEERING GROUP

POWER . MOTION . CONTROL



# ADVANCED ACTUATORS

## INSTRUMENT DESIGN OVERVIEW...

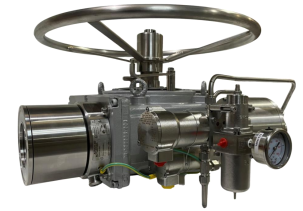
- ✓ HYLINE – Ex Linear Actuator
- ✓ HYSTEP – Ex Stepping Actuator / Pneumatic & Hydraulic
- ✓ HYTORQ – Ex Rotary Actuator
- ✓ HYFLOW – Ex Micro Pumping Units
- ✓ HYCONTROL – Ex Position Controller
- ✓ HYTRACK – Ex Rotary Position Transmitter
- ✓ HYDRIVE – Ex DC Brushless Torque Motors
- ✓ ATEX / IECEx / INMETRO / North American Certification



**ADVANCED  
ACTUATORS**  
POWER • MOTION • CONTROL



**HYLINE**



**HYSTEP**



**HYTORQ**



**HYFLOW**



**HYCONTROL**



**HYTRACK**

# HYLINE

## Linear Actuator Series

- ✓ Linear Actuator – Double Acting & Spring Failsafe
- ✓ Integrated Control Manifold 316L + Exd Solenoids
- ✓ Position Feedback & Controller – 4/20mA + HART
- ✓ Custom Mounting to suit any valve
- ✓ Standard Strokes up to 12" / 300mm
- ✓ Up to 300 Bar
- ✓ Compact Self Contained using **HYFLOW**
- ✓ ATEX / IECEx / INMETRO



**ADVANCED  
ACTUATORS**  
POWER • MOTION • CONTROL

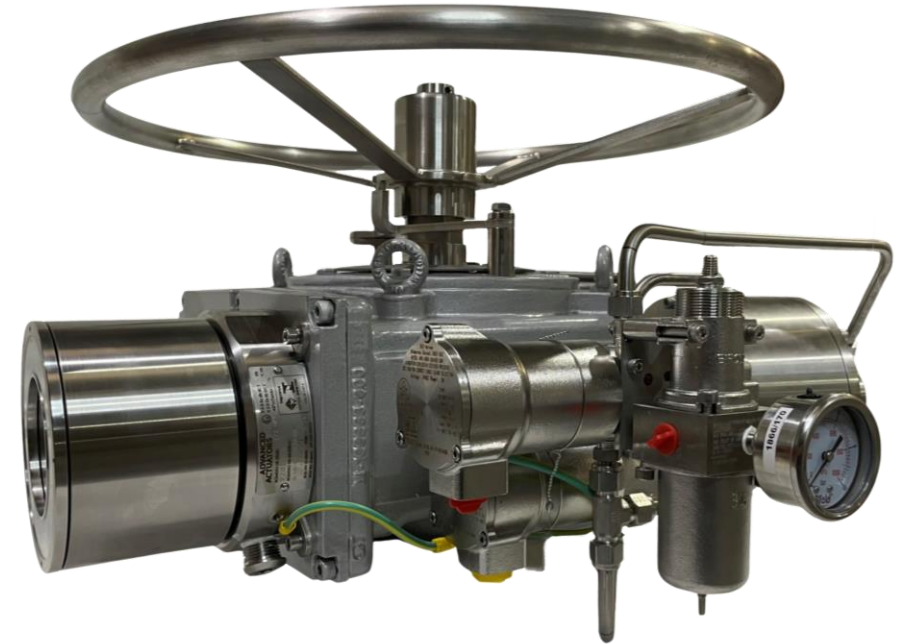
# HYLINE

# HYSTEP

## Stepping Actuator Series

- ✓ Rotary Stepping Actuator – Pneumatic & Hydraulic
- ✓ 316L Cylinders on all models
- ✓ Torques up to 500 nm as standard with larger options available
- ✓ Compact Nutbox – Upto 5000 kg
- ✓ Manual Override as standard
- ✓ Position Feedback – 4/20mA / HART +
- ✓ ATEX / IECEx / INMETRO

**ADVANCED  
ACTUATORS**  
POWER • MOTION • CONTROL



# HYSTEP

# HYTORQ

## Rotary Actuator Series

- ✓ Rotary Actuator – Double Acting & Spring Failsafe
- ✓ 2 Models - Helical Spline & Rack / Pinion Design
- ✓ Cast Housings & FEA Validated Bodies
- ✓ Standard ISO Mounting
- ✓ 90 Degrees to 360 Degrees
- ✓ Existing System Integration
- ✓ ATEX / IECEx / INMETRO
- ✓ North American Certification – Class 1 Div 1 – CSA - Pending



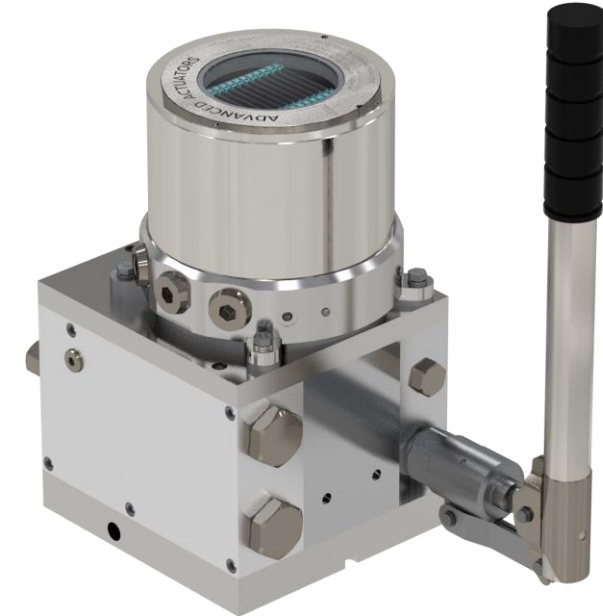
# HYTORQ

# HYFLOW

## EXD MICRO PUMPING UNIT

- ✓ 316L Stainless Steel Housing
- ✓ 24vdc Smart Brushless Motor - 4/20mA + HART 7
- ✓ Closed Loop & Maintenance Free
- ✓ Integrated Sensors
- ✓ Dynamic Flow & Pressure Control
- ✓ Failsafe Actuator Compatible
- ✓ ATEX / IECEx / INMETRO
- ✓ North American Certification – Class 1 Div 1 – CSA - Pending

**ADVANCED  
ACTUATORS**  
POWER • MOTION • CONTROL



# HYFLOW



# HYCONTROL

EXD Position Controller

- ✓ 316L Stainless Steel Housing
- ✓ Actuator Position Control - 4/20mA + HART 7
- ✓ Large Backlit Display & Simple Calibration Procedure
- ✓ Analogue & Digital Out / In
- ✓ Motor Speed Controller
- ✓ Optional Integrated 12Bit Hall Sensor for Rotary Actuators
- ✓ ATEX / IECEx / INMETRO
- ✓ North American Certification – Class 1 Div 1 – CSA - Pending

**ADVANCED  
ACTUATORS**  
POWER • MOTION • CONTROL



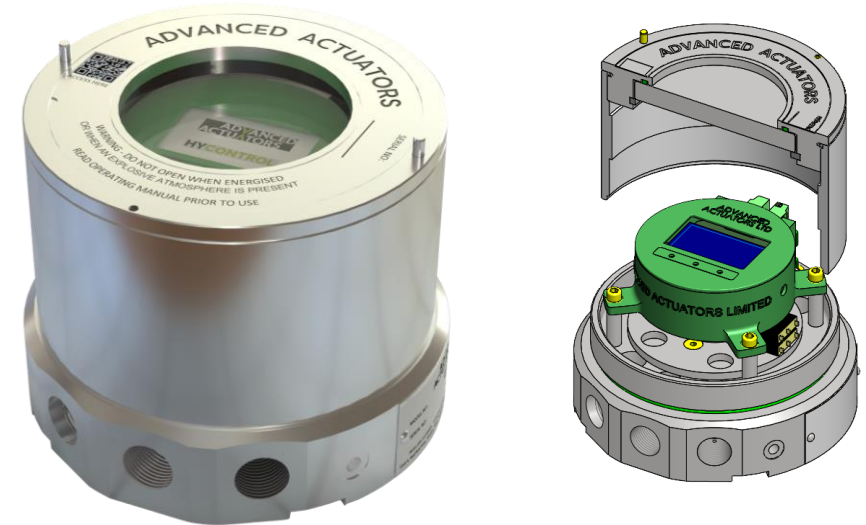
# HYCONTROL

# HYTRACK

EXD Feedback Transmitter Range

- ✓ 316L Stainless Steel Housing
- ✓ 12 Bit Contactless Sensor – 4/20mA + HART 7
- ✓ Clear LCD Screen & Simple Calibration Procedure
- ✓ 12ms Response Time
- ✓ 24vdc Loop Powered
- ✓ Mechanical & Non-Contact Limit Switches
- ✓ ATEX / IECEx / INMETRO
- ✓ North American Certification – Class 1 Div 1 – CSA - Pending

**ADVANCED  
ACTUATORS**  
POWER • MOTION • CONTROL



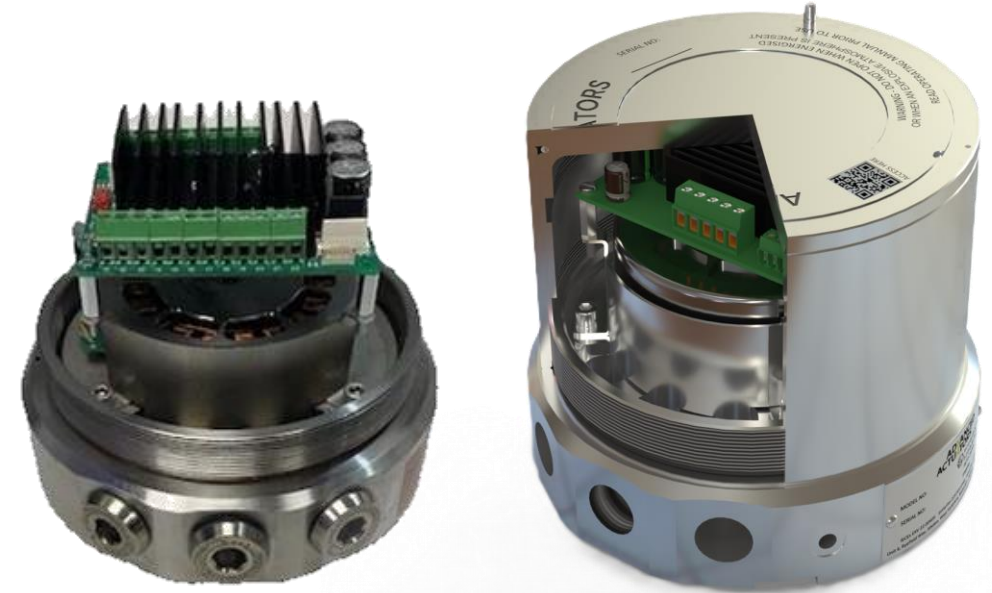
# HYTRACK



# HYDRIVE

## EXD DC Brushless Torque Motors

- ✓ 316L Stainless Steel Housing
- ✓ Hall Sensors for Speed Monitoring
- ✓ Motor Control Board with Speed & Direction Control
- ✓ Integrated Thermal Shutoff
- ✓ IP66
- ✓ Power Ranges - 90w to 600w
- ✓ ATEX / IECEx / INMETRO
- ✓ North American Certification – Class 1 Div 1 – CSA - Pending



# HYDRIVE

# HYSWITCH

EXD Proximity & Temperature Range

- ✓ 316L Stainless Steel Housing
- ✓ Safety Interlock for safe operation
- ✓ Sealed Contacts
- ✓ Zero Power Consumption
- ✓ IP66/68
- ✓ Switching Ranges from 45°C to 70°C
- ✓ ATEX / IECEx – International
- ✓ North American Certification – Class 1 Div 1 – CSA - Pending

**ADVANCED  
ACTUATORS**  
POWER • MOTION • CONTROL



# HYSWITCH

# **ADVANCED ACTUATORS**

**POWER ■ MOTION ■ CONTROL**