



The image shows a close-up of the IMI SHP Positioner, a rectangular stainless steel device with a digital display and control buttons. It is mounted on a vertical pipe. The display shows various parameters: 50.0, 50.0, 5.0, 4.9, 4.9, and 12.0. The buttons are labeled OK and ESC.

50.0	50.0	5.0	4.9	4.9	12.0
hPa	hPa	bar	bar	bar	bar
PI	PA	PB	—	—	—

## Smart High-Performance (SHP) Positioner

The new standard in  
digital valve control

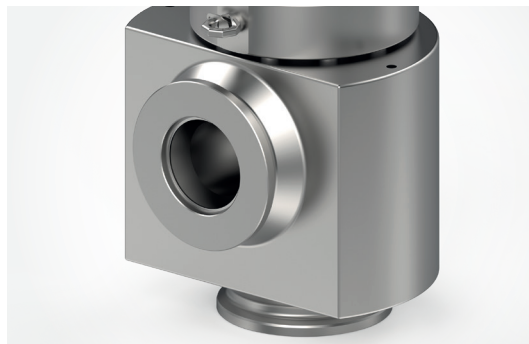
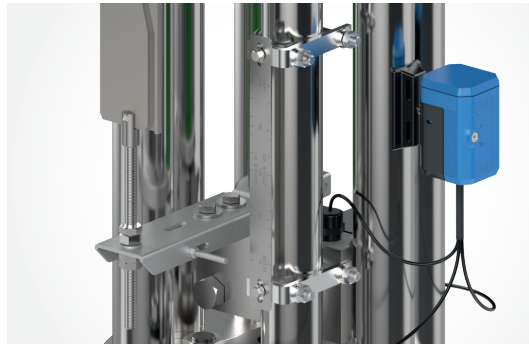
## Unparalleled control in high-stakes environments

The control valve positioner is the cornerstone of any high-performance system. That's why we developed the Smart High-Performance (SHP) valve positioner: a high-capacity, high-precision digital Positioner, engineered for the rigors of demanding industrial environments.

Equipped with the most advanced positioning algorithm in the market, it anticipates and mitigates operational challenges. This delivers a new level of control and reliability, ensuring your valve-controlled processes are always operating safely and efficiently.

## The smarter way to master your valves

The IMI SHP Positioner isn't just an upgrade; it's a leap forward in control technology. As well as its advanced diagnostics and auto-calibration features, it supports high-speed performance in large volume actuators, eliminating the need for amplification devices. Moreover, the SHP Positioner offers real-time insights, which are invaluable in implementing preventative, efficiency-driving maintenance strategies.



### Contactless magnetic feedback sensor

Delivers unparalleled accuracy and reliability, even in high-vibration environments.

### Smarter connectivity

Enables real-time monitoring, control, and customization at the valve or remotely via a laptop.

### Comprehensive diagnostics

Supports proactive maintenance and system optimization with features such as event recorder, valve life prediction, and system status.

### Certified safety

Meets global safety standards for intrinsically safe and explosion-proof environments.

### Key benefits:

- Advanced patented control algorithms for precise actuation
- Advanced data monitoring and auto-calibration
- Real-time remote control and diagnostics
- Significant reduction in air and energy consumption
- Quick response and low stroking time for high-speed performance
- Seamless integration with digital control systems
- Optional customizable control functions and data measurements



### Tailored to your system

We know that every system has its unique challenges and requirements. That's why the IMI SHP Positioner is customizable to meet your specific needs, ensuring you get the most out of your valve control system.

### Get in touch

We've been at the forefront of valve and positioner technology for over a century. Contact us to find out how the IMI SHP Positioner can add a new level of intelligence to your valve control systems.

Use the contact details on this page or scan the QR code to find out more.



IMI Critical Engineering  
Lakeside, Solihull Parkway  
Birmingham Business Park  
Birmingham B37 7XZ  
United Kingdom

Tel: +44 (0)121 717 3700

[www.imi-critical.com](http://www.imi-critical.com)

### IMI STI

Via dei Caravaggi, 15  
24040, Levate (BG)  
Italy

[imisti.sales@imi-critical.com](mailto:imisti.sales@imi-critical.com)

Tel: +39 035 2928 2

Fax: +39 035 2928 247