

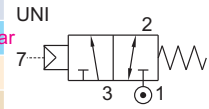
SERIES : 32P

3/2 AIR OPERATED SPRING RETURN VALVE

TYPE	PRESSURE

TYPE	PRESSURE

TYPE	PRESSURE
33101	0 - 20 bar



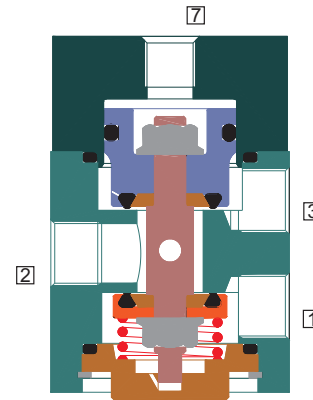
FEATURES

- Highly reliable rugged construction
- Positive Sealing and snap operation with poppet design
- Bubble tight shut off
- Vibration resistance up to 9g
- Can be used as NC/ NO/ Diverting/ Mixing
- Can be mounted in any position
- Life >10 million cycles
- Speed up to 600 cycles/ min.



WETTED PARTS

Code	※	B1	B2	B5
Body	Anodized Aluminium	Anodized Aluminium	Brass	SS 316
Internals	Aluminium, Brass and SS 316	SS 316	Brass and SS 316	SS 316
Spring/ Circlip	SS 302/ Steel Plated			
Fasteners	SS 304			
Seat, Seals	NBR, Viton			



AMBIENT AND FLUID TEMPERATURE

-30 °C to 75 °C

SPECIAL VERSION AND SUFFIX

Suffix : (Valve) OX, AM

MEDIA

Air, Inert Gases, Water, Vacuum, Free Flowing Liquid, Oil, Diesel, Kerosene, LPG, Furnace Oil

APPLICATION

Quick operation of cylinder Actuator

PORT CONNECTION

	INLET	OUTLET	EXHAUST	EXTERNAL PILOT INLET
NC	1	2	3	7
NO	3	2	-	7 1
Diverting	2	1 and 3	-	7
Mixing	1 and 3	2	-	7

Contact Rotex for

- Any other ambient, fluid temperature, media and application

SPARES

(Refer page 25 for ordering code)

SPARE KIT	CODE
Seal Kit Oring Set	98
Repair Kit Oring Set, Fastener, Springs	99



When valve is used for NC/ NO application, the Pilot pressure should be minimum fluid pressure whichever is higher. When valve is used for diverting/ mixing application, the pilot pressure should be at least 2 bar higher than main fluid pressure.

7



3/2 AIR OPERATED SPRING RETURN VALVE

SPECIFICATION

PORT CONNECTION			PRE-SSURE bar	ORIFICE (mm)		VALVE TYPE	PILOT PRESSURE	BODY MATERIAL AND INTERNALS					SEALS				MANUAL OVERRIDE			SOLENOID WEATHER PROOF		EXPLOSION PROOF		SUFFIX		POWER VA		CONSTRUCTION REFERENCE NUMBER
SIZE	BSP(F)	NPT(F)	MINIMUM	MAXIMUM	FLOW FACTOR Kv (LPM OF WATER @ 1 bar)			ALUMINIUM	ALUMINIUM + SS	BRASS (STD. PORT NPT)	SS 316/316L (STD. PORT NPT)	NBR	Viton	EPDM	HYTREL	PTFE	NIL	STAYPUT CUM MOMENTARY	FLYING LEAD	PLUG IN IP67	SQ. PLUG IN, II	TERMINAL BOX IP66	FPUB Ex d IIC, T4 OR T6	LARGE ENCLOSURE	SOLENOID SIZE	OXYGEN	AMONIA	

3/2 UNIVERSAL

1/4"	2G	2R	0	20	7	18	33101	2-20	*	B1	B2	B5	*	S2	S1																355
3/8"	3G	3R	0	20	7	18	33101	2-20	*	B1	B2	B5	*	S2	S1																359
			0	20	10	38	33101	2-20	*	B1	B2	B5	*	S2	S1																356
1/2"	4G	4R	0	20	7	18	33101	2-20	*	B1	B2	B5	*	S2	S1																360
			0	20	16	80	33101	2-20	*	B1	B2	B5	*	S2	S1																357
3/4"	6G	6R	0	20	20	110	33101	2-20	*	B1		B5	*	S2	S1																358
1"	8G	8R	0	20	25	185	33101	2-20	*	B1		B5	*	S2	S1																362

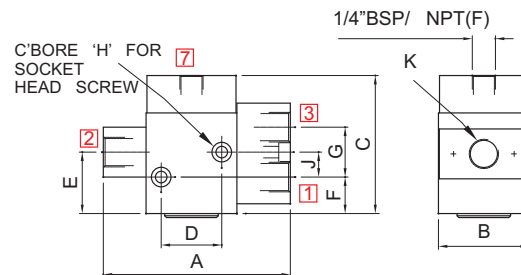
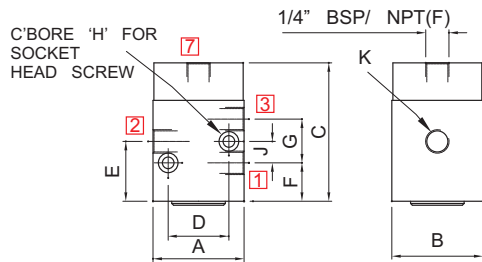
* = Do not specify when opted for. Refer Page # 22 for Valve type printed in red colour is external air operated valve

ORDERING CODE AND EXAMPLE

TYPE - SUFFIX - ORIFICE - PORT CONNECTION - BODY AND INTERNALS - SEAL
 e.g. 33101-10-3R-B5

DIMENSIONS

All Dimensions are in mm



NW	K (PORT SIZE)	A	B	C	D	E	F	CONST. REF.
VALVE TYPE : 33101								
7	1/4"	51	51	77	34	21	25	355
	3/8"	61	61	90	36	23	27	356
	1/2"	81	81	111	48	30	36	357
	3/4"	94	81	128	58	31	49	358

NW	K (PORT SIZE)	A	B	C	D	E	F	CONST. REF.
VALVE TYPE : 33101								
7	3/8"	111	51	77	34	21	25	359
7	1/2"	111	51	77	34	21	25	360
10	1/2"	121	61	90	36	23	27	361
25	1"	141	81	128	58	31	49	362